

Marex OS II – Optimized for REINTJES trolling gearboxes with V-ADS

The safe remote control for trolling gearboxes with V-ADS



Marex OS II – The safe remote control for REINTJES trolling gearboxes with V-ADS



marex *OS II*

In Hanover, Germany, Bosch Rexroth produce electrical remote controls for ship propulsion systems.

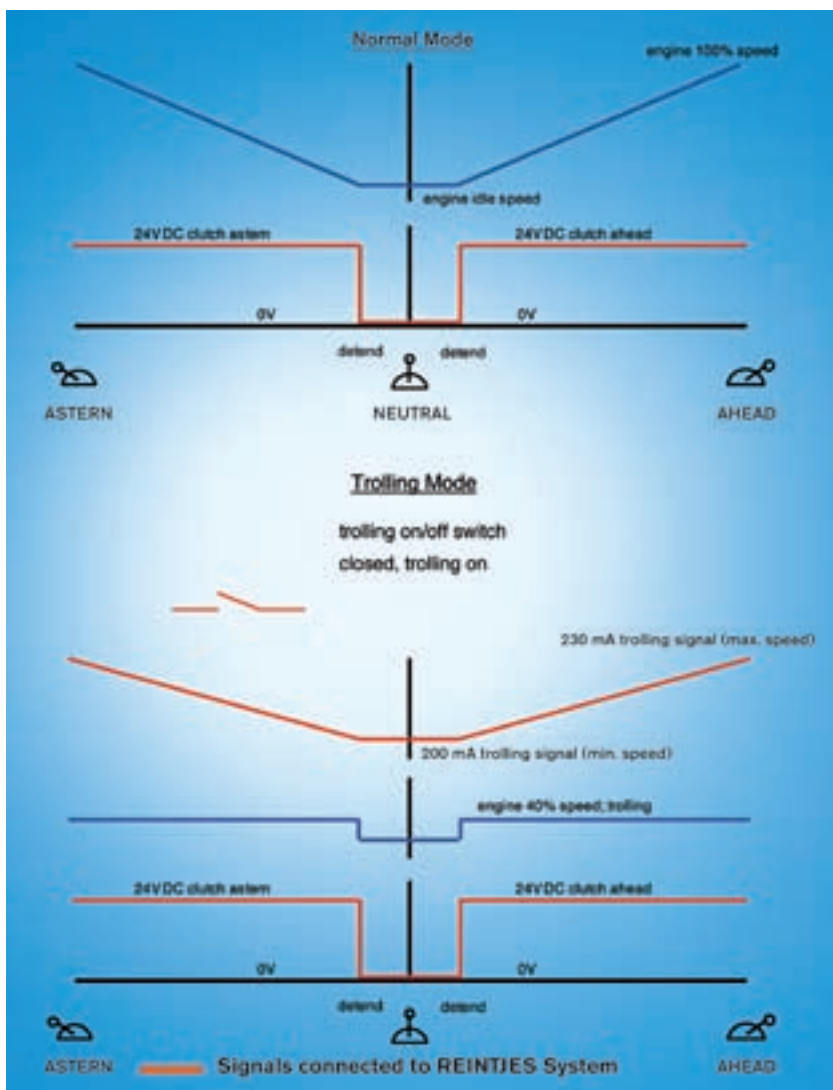
With more than 40 years of experience in the Marine Technique, Bosch Rexroth developed the modular remote control system Marex OS II. In close cooperation with the marine gearbox manufacturer REINTJES in Hameln, the Marex OS II has been optimized for trolling gearboxes with V-ADS.

The individual solution

The REINTJES trolling gearboxes with V-ADS will be controlled by the Marex OS II.

The schematic diagram shows the operation of the active speed control system with valve controller (V-ADS) by the ship remote control. Trolling will be realized by a proportional valve, which acts in the pilot control of the ahead and astern valve.

For trolling with V-ADS only the range of 200 - 230 mA is usable. The limits vary from gearbox to gearbox.



The Components

- Control head to set rpm and gear direction, in different sizes, designs and optionally with lever follow-up system
- Hand-held control station to operate the remote control during docking and launching manoeuvres
- Operating modules to control and indicate special functions
- Indication modules to display rpm, pitch of propeller and direction
- Ready-to-connect cables between the remote control's components

The system

Marex OS II stands for “Open System” and is an advancement of Marex OS. Due to its high grade of modularity, the remote control can be adapted to all particularities of the propulsion system.

- Aligned to REINTJES trolling gearboxes with V-ADS
- Flexible in the adaptation to the propulsion system
- Flexible in the adaptation to the vessel's operation
- Reliable

Engine characteristic lines for economic operation, overload control and adjustable delay times for smooth and efficient gear shifting are only a small extract of the functions the Marex OS II provides.

The technology

The remote control's components are connected by means of pre-confectioned cables. A serial CAN-bus serves for communication purposes. The CAN-bus ensures an extremely secure control procedure. Information from the safety system can be integrated into the control procedure.

- Little wiring effort
- Pre-confectioned electrical cables
- Devices ready to connect

Operating safety – certification

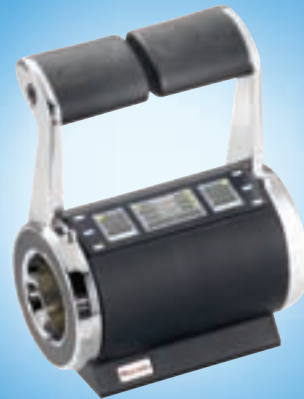
All components correspond to the highest demands of safety and fulfill the requirements of the most important classification societies.

E. g. endurance test

During this test the control head is actuated about one million times. Well-chosen materials as well as first-class quality make sure that the devices withstand this high grade of operation.

Further tests

Vibration, high-voltage, temperature, salt mist, EMC, inflammability, declination



We have certified

our products by
Germanischer Lloyd, LR,
ABS, BV, Rina, Russian
Maritime Register, Polski
Register, Korean Register,
CRS, CCS, DNV



Bosch Rexroth AG
Pneumatics
Marine Technique
Ulmer Str. 4
D-30880 Laatzen
P. O. Box 11 01 61
D-30856 Laatzen
Phone +49 511 2136-251
Fax +49 511 2136-162
marinesales@boschrexroth.de
www.boschrexroth.com/marine



Subject to alteration. This edition
supersedes all previous ones.
No part of this edition may be
reproduced without our prior
permission. Printed in Germany.
R417000950/2006-09/EN